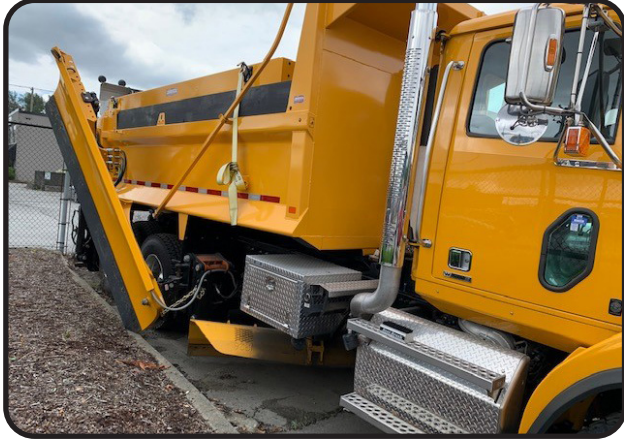


COMMERCIAL

TRUCK EQUIPMENT CO.

Monroe Snow & Ice Equipment on Western Star 4700



EQUIPMENT SPECIFICATIONS

- Central hydraulic system
- Pressure compensated load sense pump
- Cirrus Control system with 7" color touch screen
- Blade Saver function
- Low oil & hot oil warning
- Data logging for daily & seasonal totals
- Bibeau BFL-S gravel box
 - 16'-6" L x 36" sides x 48' tailgate
 - 40-ton rating
 - 24" cab shield
- 24 x 24 x 18 aluminum tool box
- Monroe snow plow
 - Mouldboard 11' x 41"
 - 9' cutting width
 - Full trip mouldboard
 - Adjustable skid shoes
 - Quick hitch
- Monroe MCV-180-84-56/201 Heavy Duty V-Box Spreader
 - Hopper is 15' l x 84" wide x 56" high
 - 9.9 cubic-yd capacity
 - Inverted "V" over conveyor
 - Tip up spinner with diverter chute
 - Fold up rear ladder
- Monroe 10' rear wing
- Full trip mechanism
- Dual nitrate cylinders interface

CHASSIS SPECIFICATIONS

- 2019 Western Star 4700
- Set back front axle
- Detroit Diesel DD13 505 hp, 1850 lb/ft
- Allison 4500RDS automatic transmission
- Front Suspension 20,000 lbs.
- Rear Suspension 46,000 lbs. - tandem
- 80-gallon / 302 liter fuel tank
- Full chassis specs available upon request

*For more information and pricing,
please contact your local branch.*

Stock Number: NV4345504

Providing expert truck equipment solutions across Canada

www.comtruck.ca 1-800-665-6126

Vancouver - Surrey - Calgary - Edmonton - Regina - Winnipeg - Woodstock - Quebec