

MANUFACTURED IN AMERICA

# AMBER ESSENTIALS

PROFESSIONAL WARNING AND LIGHTING

---

A guide to Whelen's lighting and warning products

WHELEN ENGINEERING COMPANY, INC.



**WHELEN**<sup>®</sup>  
MANUFACTURED IN AMERICA

# TABLE OF CONTENTS

- Beacons ..... 4
- QuickFit™ ..... 9
- Illumination ..... 10
- Lightheads ..... 11
- Lightbar ..... 16
- Mini Lightbars ..... 17
- Traffic Advisor™ ..... 22



Visit us at [whelen.com](http://whelen.com)  
To learn about our full line of emergency lighting and warning products.



To download WeCad™, Whelen Command®, and Pioneer™ Designer go to [whelen.com/software-downloads](http://whelen.com/software-downloads)

@WhelenENG



# About Whelen



Whelen Engineering designs and manufactures reliable and powerful warning lights, white Illumination lighting, sirens, controllers, and high-powered warning systems for Automotive and Mass Notification industries worldwide. Whelen products have been proudly designed and manufactured in America since 1952. With quality as the foundation, Whelen celebrates innovative engineering with every product made.

**Manufactured in America for Over 70 Years**  
**We never left and we're here to stay.**



Chester, Connecticut, facility



Charlestown, New Hampshire, facility

# ICON LEGEND

12 Volt	24 Volt	10-30 Volts	120 AC	IP67 Rated	AC Models UL Approved	Cruise	Hard-coated	Low Current Switching	Standard Current	Sync	WeCan® Compatible
1 Year Warranty	2 Year Warranty	5 Year Warranty	10 Year Warranty	Scan-Lock™	Steady Lock	Real Time Diagnostics	SAE Class 1	SAE Class 2	SAE Class 3	CA Title 13 Available	<small>*Please contact Whelen for specific photometric information regarding CA Title 13 lighthead and configurable lightbar product conformance.</small>

# TECH GLOSSARY

**BroadBand Blue™**  
BroadBand Blue delivers a higher intensity, creates a larger optical image, and produces a more consistent color, all while being easier on the eyes - especially at night.

**Conformal Coating**  
A thin material that conforms to the contours of the PCB to protect the electronic components from harsh environments and impact.

**DUO™**  
Two-color interleaved LEDs

**DUO+™**  
Two-color interleaved LEDs with independent control of color one and color two

**DVI™**  
DVI patterns gradually increase and decrease warning light intensity, which better conveys visual information to approaching motorists at night. These patterns clearly indicate when a vehicle is parked and improves a driver's ability to safely navigate around a work zone.

**DYAD™**  
Two-level technology

**Encapsulated**  
Lightheads are fully encapsulated for moisture and vibration resistance.

**Hard-Coat**  
Whelen's industry-first innovative Hard-Coating process counteracts the effects of environmental and chemical damages to our lenses and domes.

**Linear-LED® - (Super-LED®)**  
Whelen's optimized use of the latest generation of LEDs and unique reflector optics to produce highly intense light that has superior wide-angle visibility and rivals strobe in performance.

**Low Current**  
Low current function wires require less than 0.25 amp to operate, allowing for simple operation of each lightbar function.

**ProFocus™**  
Whelen's innovative single optic LED technology that can be customized and programmed as a spotlight or floodlight, with no moving parts.

**Proclera® Silicone Optics**  
Whelen's innovative and efficient solution to distorted optical shape and fringe lighting. Proclera Optics feature 100% internal silicone optic technology, an increased ability to harness LED output and better direct and focus light, and a fully-filled square TIR™ optic to increase optic efficiency compared to a conventional circular TIR.

**Rota-Beam™**  
Solid-state "rotating" technology, simulating the appearance of a rotating beacon without any moving parts or motors for long-life reliability.

**Scan-Lock™**  
Whelen's advanced method of changing a products flash pattern. Scan-Lock utilizes an external wire to allow the user to cycle through the entire range of flash patterns, allowing for full customization.

**Scan-Lock+™**  
The Scan-Lock+ app is the simplest way to change Whelen flash patterns. Designed for optimal convenience, Scan-Lock+ features an easy to use interface and utilizes a Bluetooth connection. Download the Scan-Lock+ app and browse, test, and assign Whelen flash patterns right from your phone.

**SOLO™**  
Single-color LEDs

**Split**  
Two-color lighthead where each color fills half of the reflector

**SmartLED®**  
Whelen's distinctive use of self-contained electronics to power and flash a particular LED product. These products require no external flasher, ballast, or power supply to operate.

**Standard Current**  
Lightbar functions are wired directly to the switching device and require switches that are matched to the current draw of the desired functions to be activated.

**Steady-Lock™**  
A time-saving feature that allows Whelen's most popular warning lightheads to be set to Steady automatically when used with a CenCom Core® system.

**Super-LED®**  
Whelen's innovative LED technology

**Sync**  
Sync provides the ability to connect multiple Whelen devices to flash together or in alternating patterns. Products with this capability allow the user to create coordinating flashing schemes.

**TIR™ - (Total Internal Reflection)**  
Whelen's optimized use of the latest generation of LEDs and unique reflector optics to produce highly intense light that can be directional in nature.

**TRIO™**  
Three-color interleaved LED's with independent control of color one, color two, and color three

**WeCad™**  
Engineered for optimal accessibility, WeCad lightbar designer delivers the ability to design custom Whelen lightbars with every available option. Adding R65 compliant options is simple, and a bill of materials will be generated to make ordering fast and easy.

**WeCan®**  
Whelen's proprietary CAN-based communication system

**WeCanX®**  
Whelen's smartest and most powerful CAN-based communication system. WeCanX provides true system synchronization, greater speed capabilities, expanded peripheral add-ons, and full support of diagnostics.

# L50 Series



Features available across product family.  
May not apply to every model



L53AM



L51AP

## FEATURES

- Twist-off dome
- Full reverse polarity protected
- 100% solid-state electronics
- Conformal coated electronics for moisture and vibration resistance
- Virtually no RFI/EMI radiation

Models	Mount	Base	Amps	VDC	Patterns	Compliance	Dimensions
L51AP	Permanent	Polycarbonate	1.5/Peak 0.6/Avg	12	25 Scan-Lock™	SAE Class 1	3.75" (95mm) H x 5" (127mm) Dia.
L51AM	Magnetic						
L53AP	Permanent		0.4/Peak 0.16/Avg		15 Scan-Lock	SAE Class 3	
L53AM	Magnetic				SignalAlert™ 75 Only		

Consult current price list for full list of available options at [whelen.com/literature](http://whelen.com/literature)

The use of a magnetic or suction mounted beacon on the roof of a vehicle in motion is not recommended, and is at the sole discretion and risk of the user.



## OPTION



MIRROR15  
Mirror Mount Bracket

# L10 Series



Features available across product family.  
May not apply to every model



L10LAP



L10HAP

## FEATURES

- Full reverse polarity protected
- 100% solid-state electronics
- Conformal coated electronics for moisture and vibration resistance
- Virtually no RFI/EMI radiation

Models	Mount	Profile	Color	Amps	VDC	Patterns	Compliance	Dimensions
L10HAM	Magnetic	High	Amber	1.0/Peak 0.4/Avg	12	SignalAlert™ 75	SAE Class 1 (Amber)	6.4" (163mm) H x 6.3" (161mm) Dia.
L10HAP	Permanent							
L10HAV	Magnetic/Suction							
L10LAM	Magnetic	Low				18 Scan-Lock™		4.9" (125mm) H x 6.3" (161mm) Dia.
L10LAP	Permanent							
L10LAV	Magnetic/Suction							

Consult current price list for full list of available options at [whelen.com/literature](http://whelen.com/literature)

The use of a magnetic or suction mounted beacon on the roof of a vehicle in motion is not recommended, and is at the sole discretion and risk of the user.



## OPTIONS



MIRROR20  
Mirror Mount Bracket



BGH  
Branch Guard High



BGL  
Branch Guard Low

# L21 Series



Features available across product family.  
May not apply to every model



## FEATURES

- Full reverse polarity protected
- 100% solid-state electronics
- Fully encapsulated for moisture, vibration, and corrosion resistance
- Virtually no RFI/EMI radiation

Models	Mount	Profile	LED Color	Base	Amps	VDC	Flash Patterns	Compliance	Dimensions				
L21HAP	Combination	High	Amber	Polycarbonate	1.5/Peak 0.60/Avg	12	25 Scan-Lock™ Flash Patterns, Including Steady-Burn (Permanent Mount Only)	J845 Class 1 (Amber) & J595 Class 3 (Amber)	6.81" (172mm) H x 6.44" (163mm) Dia.				
L21HAM	Magnetic		Amber/White										
L21H1P	Permanent		Amber/White										
L21L1P	Permanent	Low	Amber						SignalAlert™ 75 Default, 25 Scan-Lock Flash Patterns (Magnetic/Magnetic Suction Mounts Only)	1.5/Peak 0.60/Avg	12	J845 Class 1 (Amber) & J595 Class 3 (Amber)	5.31" (134mm) H x 6.44" (163mm) Dia.
L21HAV	Magnetic/Suction												
L21LAP	Combination												
L21LAM	Magnetic												
L21LAV	Magnetic/Suction												

Consult current price list for full list of available options at [whelen.com/literature](http://whelen.com/literature)

The use of a magnetic or suction mounted beacon on the roof of a vehicle in motion is not recommended, and is at the sole discretion and risk of the user.



## OPTIONS



MIRROR20  
Mirror Mount Bracket

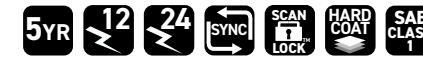


BGH  
Branch Guard High



BGL  
Branch Guard Low

# L41 Series



Features available across product family.  
May not apply to every model



## FEATURES

- Self-cleaning dome
- Full reverse polarity protected
- 100% solid-state electronics
- Fully encapsulated for moisture, vibration, and corrosion resistance
- Virtually no RFI/EMI radiation

Models	Mount	Profile	Color	Base	Amps	VDC	Flash Patterns	Control	Compliance	Dimensions
L41AP	Permanent	Medium	Amber	Cast Aluminum Powder-Coated	1.5/Peak 0.6/Avg @ 12VDC	12/24	SignalAlert™ 75 Default	Photocell Hi/Low on Permanent Mount Only (Special Order Only, Please Contact Factory)	SAE Class 1 (Amber)	4.75" (121mm) H x 6.44" (164mm) Dia.
L41AM	Magnetic									
L41AV	Magnetic/Suction		Amber/White		0.75/Peak 0.3/Avg @ 24VDC					
L411P	Permanent									

The use of a magnetic or suction mounted beacon on the roof of a vehicle in motion is not recommended, and is at the sole discretion and risk of the user.



# L31 & L32 Series

5YR 12 24 HARD COAT SAE CLASS 1 TITLE 13 SOLO

Features available across product family. May not apply to every model

\*Please contact Whelen for specific photometric information regarding CA Title 13 lighthouse and configurable lightbar product conformance.



L31HAF



L32LAF

## FEATURES

- Self-cleaning dome
- Full reverse polarity protected
- 100% solid-state electronics
- Conformal coated electronics
- Virtually no RFI/EMI radiation
- Die-cast aluminum base

Models	Mount	Profile	Color	Amps	VDC	Patterns	Control	Compliance	Dimensions			
L31HAF	Permanent	High	Amber	5.0/Peak 2.0/Avg	12	Permanent Mount 69 Scan-Lock™ Including 4 Simulated Rotating Patterns	Hi/Low Intensity Control (Permanent Mount Only)	SAE Class 1 (Amber)	4.0" (102mm) H x7.19" (182mm) Dia			
L31HAM	Magnetic											
L31HAV	Magnetic/ Suction											
L31HAF4												
L31HAFCA					24			Meets CA T13				
L31H1F	Permanent	High	Amber White	2.0/Peak 0.8/Avg	12	Magnetic Mount SignalAlert™ 75 Only		-	2.63" (67mm) H x 7.19" (182mm) Dia.			
L31L1F		Low										
L32LAF		Low	Amber								SAE Class 1 (Amber)	
L32LAM	Magnetic											
L32LAV	Magnetic/ Suction											

The use of a magnetic or suction mounted beacon on the roof of a vehicle in motion is not recommended, and is at the sole discretion and risk of the user.



## QuickFit™

2YR

Features available across product family. May not apply to every model



Also Available in White



Shown with OE Brake Light

## FEATURES

- Mounts a variety of emergency lighting without any vehicle damage, including Whelen beacons and the following mini lightbars: Responder® LP, Mini Century™, Mini Liberty™ II, and Mini Legacy®
- Durable powder-coated aluminum or steel construction in Black or White
- Vehicle specific vacuum-formed install kits provide a perfect fit
- Bolt-on installation system with fixed brackets requires no cutting or drilling
- Quickly and easily mounts using the screw holes of the vehicle's third brake light
- Designed to keep a level mounting surface for the life of the install
- Usable mounting area is approximately 7.25" (184.15mm) W x 17.25" (433mm) L

Models	Description
QFFORD1	Ford F-150, 2015-2021, and F-250/F-350 Super Duty, 2017-2022, Black Powder-Coated Aluminum Housing*
QFFORD1W	Ford F-150, 2015-2021, and F250/F-350 Super Duty, 2017-2022 White Powder-Coated Aluminum Housing*
QFFORD1S	Ford F-150, 2015-2021, and F250/F-350 Super Duty, 2017-2022 Black Powder-Coated Steel Housing
QFFRD1SW	Ford F-150, 2015-2021, and F-250/F-350 Super Duty, 2017-2022, White Powder-Coated Steel Housing
QFGM2	Chevy Silverado 1500 with Spoiler, 2019-2022, Black Powder-Coated Aluminum Housing *
QFGM2W	Chevy Silverado 1500 with Spoiler, 2019-2022, White Powder-Coated Aluminum Housing *
QFGM2S	Chevy Silverado 1500 with Spoiler, 2019-2022, Black Powder-Coated Steel Housing
QFGM2SW	Chevy Silverado 1500 with Spoiler, 2019-2022, White Powder-Coated Steel Housing
QFRAM2	Ram 1500 Classic, 2019-2021, Black Powder-Coated Aluminum Housing*
QFRAM2W	Ram 1500 Classic, 2019-2021, White Powder-Coated Aluminum Housing*
QFRAM2S	Ram 1500 Classic, 2019-2021, Black Powder-Coated Steel Housing
QFRAM2SW	Ram 1500 Classic, 2019-2021, White Powder-Coated Steel Housing

\*Note: Aluminum housings are not for use with magnetic mount lights

# Pioneer Nano™



Features available across product family.  
May not apply to every model



## FEATURES

- 8° spotlight pattern standard
- Includes an additional 40° x 20° flood optic lens
- Optic lens changes easily via removable lens retainer
- Injection-molded polycarbonate lenses are impact resistant
- Die-cast aluminum powder-coated housing
- Solid-state electronics
- LEDs are instant On/Off, eliminating ramp-up time and high current inrush
- Correlated Color Temperature (CCT) of 5,700° kelvin simulates bright midday light
- Includes 72" cable

Models	Mount	Housing	Diodes	Amps	VDC	Lumens	Dimensions
NP3BW	3-LED, with Bail	White	3	1	12	1,566	2.25" (57mm) H x 3.5" (89mm) W x 1.75" (44mm) D
NP3BB		Black					
NP6BW	6-LED, with Bail	White	6	1.5	12	2,552	3.0" (76mm) H x 3.5" (89mm) W x 1.75" (44mm) D
NP6BB		Black					

Consult current price list for full list of available options at [whelen.com/literature](http://whelen.com/literature).



# Rubber Housing Spot/Floodlights



Features available across product family.  
May not apply to every model

## FEATURES

- Rubber housing with stainless steel stud/swivel
- Hard-coated lenses resist environmental damage from sand, sun, salt, and road chemicals



P36SLCHG

Model	Description	Amps	VDC	Lumens	Dimensions
P36SLCHG	PAR-36, Combination Spotlight/Floodlight	0.85 @ 12 VDC 0.43 @ 24 VDC	12/24	700	5.5" (139mm) H x 3.75" (94mm) D x 4.81" (122mm) Dia

Consult current price list for full list of available options at [whelen.com/literature](http://whelen.com/literature).



# 500 Series



Features available across product family.  
May not apply to every model



50A03ZAR

50C03ZCR

## FEATURES

- Directional optics
- Fully encapsulated for moisture, vibration, and corrosion resistance
- Requires additional mounting
- 6" pigtail included

Models	Mount	Color	Lens Color	Amps	VDC	Flash Patterns	Compliance	Dimensions
50A03ZAR	Requires Optional Mounting	Amber	Amber	0.63/Peak 0.32/Avg	12	25 Scan-Lock*	J595 Class 1 (Amber) J845 Class 2 (Amber) & CA T13	5.0" (127mm) W x 1.63" (41mm) H x 1.38" (35mm) D
50A03ZCR			Clear					
50C03ZCR		White	J595 Class 1					

Consult current price list for full list of available options at [whelen.com/literature](http://whelen.com/literature)



## OPTIONS



5GROMMET  
Grommet



5TSMAB  
Black Surface  
Mount Adapter



5TSMAC  
Chrome-Plated  
Surface Mount Adapter

# 2G & 5G Series



Features available across product family.  
May not apply to every model

## FEATURES

- Hard-coated lenses resist environmental damage from sand, sun, salt, and road chemicals
- Fully encapsulated for moisture, vibration, and corrosion resistance
- 12" pigtail and vinyl grommet included



2GA00FAR

5GA00FAR

Models	Description	Lens Color	Amps	VDC	Patterns	Compliance	Dimensions
2GA00FAR	4" Round LED Warning Light, Amber	Amber	0.50/Peak 0.30/Avg	12	15 Scan-Lock*	J595 Class 1	5.5" (140mm) Dia. x 1.25" (32mm) D (with grommet)
5GA00FAR	6" Oval LED Warning Light, Amber						Clear
5GA00FCR							





# ION™ T-Series™ & Mini T-Series™

10YR 12 SAE CLASS 1 TITLE 13 IP67 HARD COAT SYNC SCAN LOCK STEADY STATE LOCK SOLO DUO

Features available across product family.  
May not apply to every model

\*Please contact Whelen for specific photometric information regarding CA Title 13 lighthouse and configurable lightbar product conformance.



TLIC



TLMIA



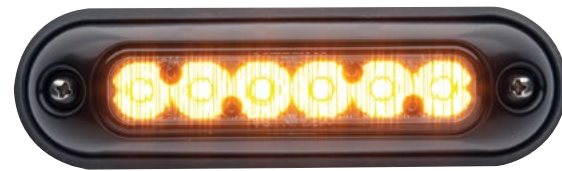
T-Series profile

## ION™ Series

10YR 12 SAE CLASS 1 TITLE 13 HARD COAT SYNC SCAN LOCK STEADY STATE LOCK SOLO DUO

Features available across product family.  
May not apply to every model

\*Please contact Whelen for specific photometric information regarding CA Title 13 lighthouse and configurable lightbar product conformance.



IONSMA



WIONSMA

### FEATURES

- Hard-coated lenses resist environmental damage from sand, sun, salt, and road chemicals
- Fully encapsulated for moisture, vibration, and corrosion resistance
- Easily mounts to surface with two screws
- 12" pigtail and vinyl grommet included

Models	Lamp Type	LED Color	Amps	VDC	Patterns	Compliance	Dimensions
IONSMA	Directional	Amber	1.0/Peak 0.40/Avg	12	33 Scan-Lock™	SAE Class 1 for Both J845 and 595 & CA T13	5.94" (150mm) W x 1.68" (43mm) H x 1.13" (28mm) D
IONSMC		White				SAE J595 Class 1	
IONSMF	Amber/White	SAE J595 Class 1 & J845 Class 2					
WIONSMA	Amber	SAE Class 1 for Both J845 and 595 & CA T13					
WIONSMC	Wide-Angle	White				SAE Class 1 for Both J845 and 595	
WIONSMF	Amber/White	SAE Class 1 for Both J845 and 595					



### FEATURES

- Linear Super-LED® optics
- Fully encapsulated for moisture, vibration and corrosion resistance
- Easily mounts to surface with two screws
- Clear lens included
- 4-wire 6" pigtail and Black mounting flange included
- Sync to other Whelen Sync products

T-Series Models	LED Color	Amps	VDC	Patterns	Compliance	Dimensions
TLIA	Amber	0.6/Peak 0.24/Avg	12	25 Scan-Lock™	SAE Class 1 & T13	5.14" (131mm) W x 1.49" (38mm) H x 0.52" (13mm) D
TLIC	White				69 Scan-Lock™	
TLI2F	Amber/White					
TLI2K	Amber/Red					
TLI2M	Amber/Blue					
TLI2P	Amber/Green					
Mini T-Series Models	LED Color	Amps	VDC	Patterns	Compliance	Dimensions
TLMIA	Amber	0.4/Peak 0.16/Avg	12	25 Scan-Lock™	SAE Class 1	3.34" (85mm) W x 1.49" (38mm) H x 0.54" (14mm) D
TLMIC	White					
TLMI2F	Amber/White					
TLMI2K	Amber/Red					
TLMI2M	Amber/Blue					
TLMI2P	Amber/Green					



# TIR3™ / LIN3™ Series



Features available across product family.  
May not apply to every model



TIR3 in dual Chrome housing



TIR3 horizontal mount



LIN3



TIR3 vertical mount

## FEATURES

- Directional TIR3 or LIN3 optics
- Fully encapsulated for moisture, vibration and corrosion resistance
- Easily mounts to surface with two screws
- Includes a 6" pigtail and Black polycarbonate mounting flange
- Sync to other Whelen Sync products

Models	Technology	Mount	Color	Lens	Amps	VDC	Patterns	Compliance	Dimensions
RSA03ZCR	TIR3 Super-LED®	Horizontal	Amber	Clear	0.40/Peak 0.16/Avg	12	25 Scan-Lock™	SAE Class 1	3.50" (89mm) W x 1.13" (28mm) H x 1.25" (32mm) D
RSC03ZCR			White						
RVA03ZCR		Vertical	Amber						
RVC03ZCR			White						
RSA02ZCR	LIN3 Super-LED	Horizontal	Amber						
RSC02ZCR			White						

Consult current price list for full list of available options at [whelen.com/literature](http://whelen.com/literature)



## OPTIONS



RFLANGCD  
Chrome Flange



RFLANG2B/RFLANG2C  
Dual Surface Mount  
Flange, Black or Chrome



RBKT1  
"L" Mounting  
Bracket For One Lighthead



RBKT2  
"L" Mounting  
Bracket For Two  
Lighthead

# Vertex™ Series



Features available across product family.  
May not apply to every model



VTX609A



VTX609C

## FEATURES

- Self-contained light with in-line lamp driver
- Produces light in a hemispheric pattern
- Omni-directional optics
- Fully encapsulated for moisture, vibration and corrosion resistance
- Sync to other Whelen Sync products
- Mounts internally within composite headlight and taillight assemblies
- Includes a 9' pre-wired and sealed 4-C/22 gauge cable with power, pattern, and synchronize wires

Models	LED Color	Technology	Mount	Amps	VDC	Patterns	Compliance	Dimensions
VTX609A	Amber	Super-LED®	1" Hole Recess Or Surface (Mounting Purchased Separately)	0.75/Peak 0.30/Avg	12	25 Scan-Lock™	SAE Class 2	1" (26mm) H x 1.63" (41mm) Dia.
VTX609C	White							
VTX9F	Amber/White						SAE Class 3	
VTX9K	Amber/Red							
VTX9M	Amber/Blue							
VTX9P	Amber/Green						-	

Consult current price list for full list of available options at [whelen.com/literature](http://whelen.com/literature)



## OPTIONS



VTXFB Black Flange



VTXFC Chrome Flange



# Justice® Series

5YR 12 SC HARD COAT SAE CLASS 1 ISOLO

Features available across product family.  
May not apply to every model



JEF8AMB

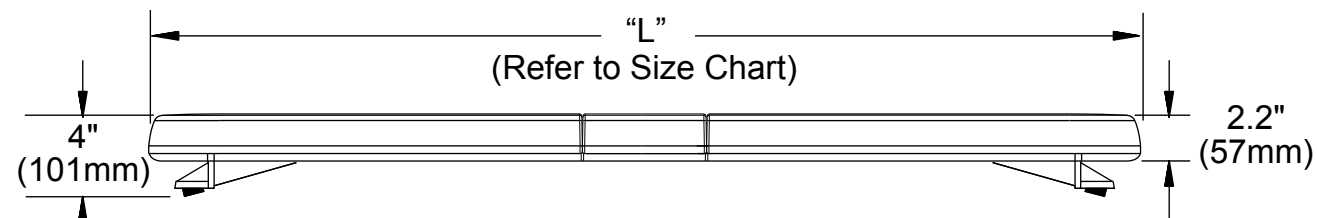
## FEATURES

- Linear Super-LED® technology
- Black Polycarbonate Base on extruded Aluminum platform
- 12 VDC
- 52 Scan-Lock™ flash patterns
- SAE Class 1
- Amber LEDs with Clear lens
- Advanced thermal design
- 15' passenger side exit cable
- Easily upgraded in the field
- Includes Mounting Kit 29, allowing for permanent or strap mounting (strap kit purchased separately)

Models	Modules	Amps
JEF8AMB	4-Corner Linear Super-LED® and 8 CON3™ Inboard Modules	8.0/Peak
JEF2AMB		3.2/Avg



## DIMENSIONS



"L" Size Chart

50" (127cm)	56" (143cm)
----------------	----------------



# Mini Liberty™ II Series

5YR 12 SC SCAN LOCK HARD COAT SAE CLASS 1 ISOLO PROCLERA

Features available across product family.  
May not apply to every model



IT9AAAAP

## FEATURES

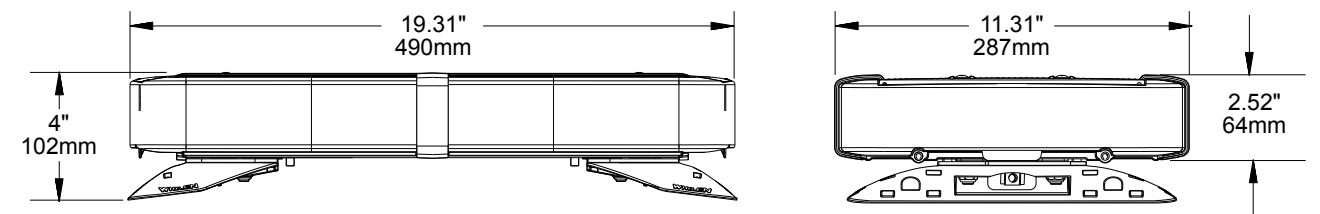
- 4-Corner Linear Super-LED® modules
- Extruded Aluminum base
- Amber LEDs with Clear lens
- 12 VDC
- SAE Class 1
- Polycarbonate dome
- 100% solid-state electronics
- Advanced thermal design

Models	Mount	Amps	Patterns	Color	Dome
IT9AAAAP	Permanent	4.0/Peak	67 Scan-Lock™ for Permanent Mount	Amber	Clear
IT9AAAAM	Magnetic	1.6/Avg	SignalAlert™ 75 for Magnetic Mount		

The use of a magnetic mounted beacon or lightbar on the roof of a vehicle in motion is not recommended and is at the sole discretion and risk of the user.



## DIMENSIONS





# Mini Justice® Series

5YR 12 SC SCAN LOCK HARD COAT SAE CLASS 1 ISOLO PROCLERA



## FEATURES

- Four Linear-LED® corners and four Conical inboard modules
- Black polycarbonate base on extruded Aluminum platform
- Clear domes
- 12 VDC

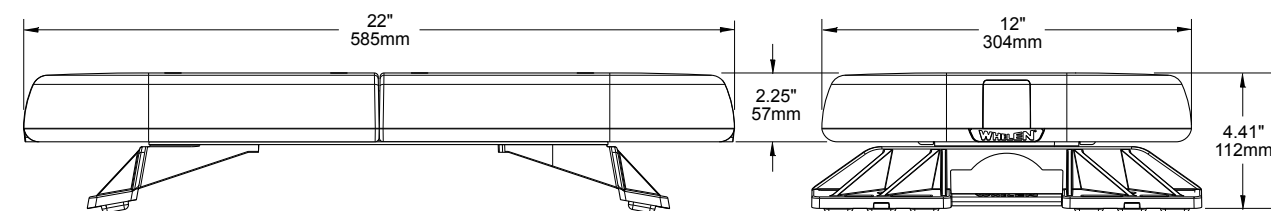
- SAE Class 1
- 95 Scan-Lock™ flash patterns (permanent mount)
- Polycarbonate dome
- 100% solid-state electronics
- Preconfigured lightbars

Models	Technology	Mount	Amps	Color	Dome
MJEG1A	Linear & CON3™ Super-LED®	Magnetic	6.0/Peak 2.4/Avg (4 Corner Only)	Amber	Clear
MJEG1F				Amber/White	
MJEP1A		Permanent		Amber	
MJEP1F				Amber/White	
MJEG1M		Magnetic		Amber/Blue	
MJEP1M		Permanent		Amber/Blue	
MJES1A		Stud		Amber	

The use of a magnetic mounted beacon or lightbar on the roof of a vehicle in motion is not recommended and is at the sole discretion and risk of the user.



## DIMENSIONS



⚠ WARNING: This product may contain chemicals known to the State of California to cause cancer and birth defects or other reproductive harm. For more information, visit [whelen.com/regulatory](http://whelen.com/regulatory).

# Mini Century™ Series

5YR 12 SC SCAN LOCK HARD COAT SAE CLASS 1 ISOLO

Features available across product family.  
May not apply to every model



## FEATURES

- Four Linear Super-LED® corners and TIR6™ Super-LED inboards
- Extruded aluminum platform
- Polycarbonate dome
- Compression fit gasket
- Preconfigured lightbars

- 100% solid-state electronics
- Standard current switching and patterns
- 17 Scan-Lock™ flash patterns
- Aluminum Base
- 12 VDC
- SAE Class 1

Models	Mount	Color	Dome	Amps	Dimensions
MC11MA	Magnetic	Amber	Amber	3.6/Peak 2.2/Avg	2.40" (61mm) H x 7.74" (197mm) W x 11.50" (292mm) L
MC11MCA			Clear		
MC11PA	Permanent	Amber/White	Amber		
MC11SA			Clear		
MC11SCA	Stud	Amber/White	Amber		
MC16PA			Clear		
MC16PCA	Permanent	Amber	Amber		
MC16PF			Amber Driver, White Passenger		
MC16PM	Permanent	Amber/Blue			
MC16MA	Magnetic	Amber	Amber		
MC16MCA			Clear		
MC16MF	Magnetic/Suction	Amber	Amber		
MC16VA			Amber		
MC16VCA	Magnetic/Suction	Amber	Amber		
MC16VF			Amber Driver, White Passenger		
MC16VM	Magnetic/Suction	Amber	Amber		
MC16SA			Amber		
MC16SF	Stud	Amber	Amber		
MC23PA			Amber Driver, White Passenger		
MC23PCA	Permanent	Amber	Amber	7.2/Peak 4.4/Avg	2.50" (61mm) H x 7.74" (197mm) W x 23.26" (591mm) L
MC23PF			Amber Driver, White Passenger		
MC23PM	Amber/Blue				
MC23MA	Magnetic	Amber	Amber		
MC23MCA			Clear		
MC23MF	Magnetic/Suction	Amber	Amber		
MC23VA			Amber		
MC23VCA	Magnetic/Suction	Amber	Amber		
MC23VF			Amber Driver, White Passenger		
MC23VM	Magnetic/Suction	Amber	Amber		
MC23SA			Amber		
MC23SCA	Stud	Amber	Amber		
MC23SF			Amber Driver, White Passenger		
MC23SM	Stud	Amber	Amber		
			Amber/Blue		



The use of a magnetic mounted beacon or lightbar on the roof of a vehicle in motion is not recommended and is at the sole discretion and risk of the user.

⚠ WARNING: This product may contain chemicals known to the State of California to cause cancer and birth defects or other reproductive harm. For more information, visit [whelen.com/regulatory](http://whelen.com/regulatory).

# Responder® R1LP Series



Features available across product family.  
May not apply to every model



R1LPVF



R1LPPA

## FEATURES

- Six Conical modules
- Polycarbonate dome
- 100% solid-state electronics
- Black polycarbonate base and platform
- 12 VDC
- SAE Class 1

Models	Technology	Mount	Color	Dome	Amps	Patterns	Dimensions
R1LPPA	CON3™ Super-LED®	Permanent	Amber	Amber	3.0/Peak 1.2/Avg	55 Scan-Lock™ Including 4 Simulated Rotating Patterns (Permanent Mount Only) ActionScan™ Default (Magnetic Mount Only)	2.88" (73mm) H x 6.31" (160mm) W x 17" (432mm) L
R1LPPF			Amber/White	Clear			
R1LPPP			Amber/Green				
R1LPPCA			Amber				
R1LPMA		Magnetic	Amber	Amber			
R1LPMCA			Amber/White	Clear			
R1LPMF		Magnetic/Suction	Amber	Amber			
R1LPVA			Amber/White	Clear			
R1LPVCA			Amber/White	Clear			
R1LPVF							

The use of a magnetic mounted beacon or lightbar on the roof of a vehicle in motion is not recommended and is at the sole discretion and risk of the user.



# Responder® R2LP Series



Features available across product family.  
May not apply to every model



R2LPMF

## FEATURES

- Six Linear Super-LED® modules
- Polycarbonate or aluminum platform
- Polycarbonate dome
- 100% solid-state electronics
- 12 VDC
- SAE Class 1
- 55 Scan-Lock™ flash patterns including 4 simulated rotating patterns (permanent mount only)
- ActionScan™ flash patterns default (magnetic mount only)

Models	Mount	Base	Color	Dome	Amps	Dimensions
R2LPPA	Permanent	Polycarbonate	Amber	Amber	6.0/Peak 2.4/Avg	2.88" (73mm) H x 6.31" (160mm) W x 17" (432mm) L
R2LPPCA			Amber/White	Clear		
R2LPPF			Amber/Blue			
R2LPPM						
R2LPMA	Magnetic		Amber	Amber		
R2LPMCA			Amber/White	Clear		
R2LPMF	Magnetic/Suction		Amber	Amber		
R2LPVA			Amber/White	Clear		
R2LPVCA			Amber/White	Clear		
R2LPHPA	Permanent	Aluminum	Amber	Amber		3.25" (82mm) H x 6.31" (160mm) W x 17" (432mm) L
R2LPHPCA						
R2LPHMA	Magnetic			Clear		
R2PHMCA						
R2LPHVA	Magnetic/Suction					
R2PHVCA						

The use of a magnetic mounted beacon or lightbar on the roof of a vehicle in motion is not recommended and is at the sole discretion and risk of the user.



# Traffic Advisor™ Front Load

5YR 12V HARD COAT SAE CLASS 1 SOLO™

Features available across product family.  
May not apply to every model



TACF85



This controller is included with model TACF85

## FEATURES

- Interior or exterior applications
- Left arrow, right arrow, split arrow & warning function
- Extruded aluminum housing
- Fully encapsulated for moisture, vibration, and corrosion resistance

Models	Lamps	Lightheads	Description	VDC	Compliance	Dimensions
TACF85	8	CON3™	15' Cable, Includes Clear Lens and TACTL5 Control Head	12	SAE Class 1	2.38" (60mm) H x 2.38" (60mm) W x 45.13" (115cm) L
TACF85LH			15' Cable, Includes Amber Lens and TACTL5 Control Head			

Consult current price list for full list of available options at [whelen.com/literature](http://whelen.com/literature)



# Traffic Advisor™ TAC8 (Economy)

5YR 12V IP67 HARD COAT SAE CLASS 1 SOLO™

Features available across product family.  
May not apply to every model



TAC815



## FEATURES

- Black extruded aluminum housing
- Four operating modes: left, right, split, or flashing
- Control head mounting kit included and allows for VHB double-sided adhesive, Velcro®, and permanent mount
- Rear dip switch provides 8 flash pattern choices

Models	Lamps	Lightheads	Description	VDC	Compliance	Dimensions
TAC815	8	SOLO™ Super-LED®	15' Cable, Includes Control Head	12	SAE Class 1	2.0" (60mm) H x 2.64" (70mm) W x 47.75" (121cm) L
TAC830			30' Cable, Includes Control Head			
TAC850			50' Cable, Includes Control Head			



# AMBER ESSENTIALS

PROFESSIONAL WARNING AND LIGHTING

A guide to Whelen's lighting and warning products

Distributed by:

**WHELEN**<sup>®</sup>  
MANUFACTURED IN AMERICA

@WhelenENG



**NASCAR**<sup>™</sup>  
OFFICIAL WARNING LIGHTS

Preferred Warning Lights of 

Whelen Engineering Company  
(860) 526-9504  
www.whelen.com

Whelen Engineering reserves the  
right to upgrade and improve  
products without notice.

© 2023 Whelen Engineering  
Company, Inc. Printed in U.S.A.  
Code No. C11539M-06/23

All products proudly designed,  
manufactured, and assembled in the U.S.A.  
• ISO 9001 Registered QMS